

Mechanical Pressure Measurement

Process Pressure Gauge

General Industrial Gauge



Model	CX Series	CP Series	SC Series
Dial Size (Inch.)	1½", 2", 2½", 4", 6", 8", 10"	2", 2½"	2", 2½", 4", 6"
Accuracy Class	KL 2.5 (Ø <4"), KL 1.6 (Ø ≥4")	KL 1.6	KL 1.6 (Ø <4"), KL 1.0 (Ø ≥4")
Pressure Range	Compound -1.. 24 bar Vacuum -1 bar ..0 Pressure 0.. 600 bar	Compound -1.. 24 bar Vacuum -1 bar ..0 Pressure 0.. 400 bar	Compound -1.. 24 bar Vacuum -1 bar ..0 Pressure 0..1000 bar
Liquid Filling	Dry gauge	Dry gauge	Dry or Filled
Connection Size	⅛"NPT or BSP (Ø1½"..2") ¼" NPT or BSP (Ø2"..2½") ½" NPT or BSP (Ø4".. 10")	¼" NPT or BSP	¼" NPT or BSP (Ø2"..2½") ½" NPT or BSP (Ø4".. 10")
Index Protection	IP 32 as per EN 60529/IEC 60529	IP 32 as per EN 60529/IEC 60529	IP 65 as per EN 60529/IEC 60529
Operating Temperature	Ambient -20°..+60°C Medium Max. +60°C	Ambient -20°..+60°C Medium Max. +60°C	Ambient -30°..+60°C (Dry) -20°..+60°C (Glycerine filled) -30°..+60°C (Silicone filled) Medium Max. +60°C
Design Material	Case-Bezel : Steel Sensing : Copper alloy Connection : Brass Window : Glass	Case-Bezel : Steel Sensing : Copper alloy Connection : Brass Window : Glass	Case-Bezel : SS304 Sensing : Copper alloy Connection : Brass Window : Glass
Mounting	(D) Bottom mounting (B) Back mounting (W) Wall mount, back flange (P) Panel mount, front flange (U) U-Clamp	(D) Bottom mounting (B) Back mounting	(D) Bottom mounting (B) Back mounting (W) Wall mounting (P) Panel mounting (U) U-Clamp

All Stainless steel Pressure Gauge



Reduce shock to the gauge to prevent any sudden pressure surges or oscillations happen



Model	SS Series	SX Series	SXT500 Series (Transmitter)
Dial Size (Inch.)	1½", 2", 2½"	4", 4½", 6", 8", 10"	4" and 6"
Accuracy Class	KL 1.6	KL 1.0	KL 1.6 (Indication), 0.5 (Transmitter)
Pressure Range	Compound -1.. 24 bar Vacuum -1 bar ..0 Pressure 0..1000 bar	Compound -1.. 24 bar Vacuum -1 bar ..0 Pressure 0..1000 bar	Compound -1.. 24 bar Vacuum -1 bar ..0 Pressure 0..600 bar
Liquid Filling	Dry or Filled	Dry or Filled	Dry
Connection Size	⅛"NPT or BSP (Ø1½"..2") ¼" NPT or BSP (Ø2"..2½")	½" NPT or BSP	½" NPT or BSP
Index Protection	IP 65 as per EN 60529/IEC 60529	IP 65 as per EN 60529/IEC 60529	IP 54 as per EN 60529/IEC 60529
Operating Temperature [SXT500 Power & Output]	Ambient -30°..+60°C (Dry) -20°..+60°C (Glycerine filled) -30°..+60°C (Silicone filled) Medium Max. +60°C	Ambient -30°..+60°C (Dry) -20°..+60°C (Glycerine filled) -30°..+60°C (Silicone filled) Medium Max. +60°C	Ambient -10°..+55°C, Medium Max.+90°C Power & Output signal [24 VDC +10%..+5% & output 4..20 mA]
Design Material	Case-Bezel : SS304 Sensing : SS304 Connection : SS316 Window : Toughened glass	Case-Bezel : SS304, *SS316 Sensing : SS304 Connection : SS316 Window : Glass, *Safety glass	Case-Bezel : SS304 Sensing : SS304 Connection : SS316 Window : Toughened glass
Mounting	(D) Bottom mounting (B) Back mounting (W) Wall mounting (P) Panel mounting (U) U-Clamp	(D) Bottom mounting (B) Back mounting (W) Wall mounting (P) Panel mounting (U) U-Clamp	(D) Bottom mounting (W) Wall mounting *Option Intrinsically safe version

Low Pressure Measurement

Capsule Gauge

Industrial Capsule Pressure Gauge



Model	SLS Series	SL Series
Dial Size (Inch.)	2½", 3", 4", 6"	2½", 3", 4", 6"
Accuracy Class	KL 2.5 (Ø <4"), KL 1.6 (Ø ≥4")	KL 2.5 (Ø <4"), KL 1.6 (Ø ≥4")
Pressure Range	Compound -200..+400 mbar Vacuum -600 mbar ..0 Pressure 0..16 up to 600 mbar	Compound -200..+400 mbar Vacuum -600 mbar ..0 Pressure 0..16 up to 600 mbar
Liquid Filling	Dry gauge	Dry gauge
Connection Size	¼" NPT or BSP (Ø2½" ..3") ⅜" NPT or BSP (Ø3") ½" NPT or BSP (Ø4" ..6")	¼" NPT or BSP (Ø2½" ..3") ⅜" NPT or BSP (Ø3") ½" NPT or BSP (Ø4" ..6")
Index Protection	IP 32 as per EN 60529/IEC 60529	IP 44 as per EN 60529/IEC 60529
Operating Temperature	Ambient -10°..+70°C Medium Max. +90°C	Ambient -10°..+70°C Medium Max. +90°C
Design Material	Case-Bezel : Black painted steel Capsule : Cupreous alloy Connection : Brass Window : Glass	Case-Bezel : SS304 Capsule : Copper alloy Connection : Brass Window : Glass
Mounting	(D) Bottom mounting (B) Back mounting (W) Wall mount, back flange (P) Panel mount, front flange (S) Surface mount, back flange	(D) Bottom mounting (B) Back mounting (W) Wall mount, back flange (P) Panel mount, front flange (S) Surface mount, back flange

Best Quality Diaphragm



Blowout protection to prevents release of any process medium out the case front or face



Reduce shock to the gauge to prevent any sudden pressure surges or oscillations happen

All Stainless steel Capsule Pressure Gauge



Overpressure Resistance
3 times for P = 0..25 mBar
10 times for P > 0..25 mBar



Model	SL1 Series	SLX Series	DSL Series
Dial Size (Inch.)	2½", 3", 4", 6"	4", 6"	4", 6"
Accuracy Class	KL 2.5 (Ø <4"), KL 1.6 (Ø ≥4") of F.S.	KL 1.6 of Full Scale	KL 1.6 of Full Scale
Pressure Range	Compound -200..+400 mbar Vacuum -600 mbar ..0 Pressure 0..10* up to 600 mbar	Compound -200..+400 mbar Vacuum -600 mbar ..0 Pressure 0..25 up to 1000 mbar	0..16 to 250 mbar (Diaph. Ø160mm) 0..400 mbar to 25 bar (Diaph. Ø100mm) Vacuum and Compound ranges
Liquid Filling	Dry or Filled (P ≥160 mbar)	Dry or Filled (P ≥160 mbar)	Dry execution
Connection Size	¼" NPT or BSP (Ø2½" ..3") ⅜" NPT or BSP (Ø3") ½" NPT or BSP (Ø4" ..10")	½" NPT or BSP	½" NPT or BSP
Index Protection	IP 54 as per EN 60529/IEC 60529	IP 65 as per EN 60529/IEC 60529	IP 54 as per EN 60529/IEC 60529
Operating Temperature	Ambient -10°..+70°C (Dry) -20°..+80°C (Silicone filled) Medium Max. +100°C	Ambient -10°..+70°C (Dry) -20°..+80°C (Silicone filled) Medium Max. +100°C	Ambient -10°..+70°C Medium Max. +100°C
Design Material	Case-Bezel : SS304, *SS316 (Ø4" ..6") Capsule : SS316 Connection : SS316 Window : Glass, *Safety glass	Case-Bezel : SS304, *SS316 Capsule : SS316 Connection : SS316 Window : Glass, *Safety glass	Case-Bezel : SS304 Diaphragm : SS316L Connection : SS316 Window : Glass, *Safety glass
Mounting	(D) Bottom mounting (B) Back mounting (W) Wall mount, back flange (P) Panel mount, front flange (S) Surface mount, back flange	(D) Bottom mounting (B) Back mounting (W) Wall mount, back flange (P) Panel mount, front flange (S) Surface mount, back flange	(D) Bottom mounting

Mechanical Pressure Measurement

Safety Pattern Pressure Gauge

Safety Pattern with Blow Out Back safety



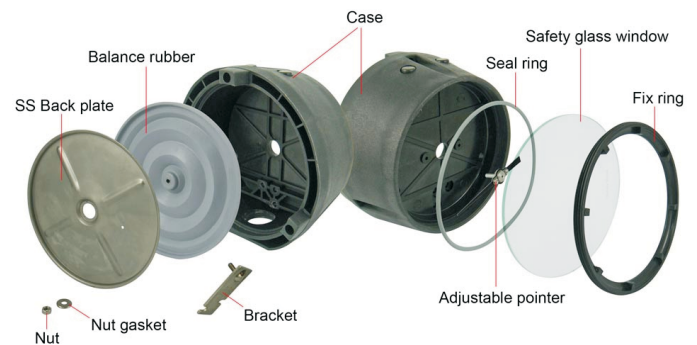
Model	GS550 Series	GS551 Series	SL550 Series
Dial Size (Inch.)	4½"	4½"	4½"
Accuracy Class	KL ±0.5 (ASME B40.100 Grade 2A)	KL ±0.5 (ASME B40.100 Grade 2A)	±2%-1%-2% (ASME B40.100 Grade A)
Pressure Range	Compound -1.. 24 bar Vacuum -1 bar ..0 Pressure 0.. 1000 bar	Compound -1.. 24 bar Vacuum -1 bar ..0 Pressure 0.. 1000 bar	Compound -200..+400 mbar Vacuum -600 mbar ..0 Pressure 0..10 to 600 mbar
Liquid Filling	Dry and Filled	Dry and Filled	Dry and Filled (P≥ 160 mBar)P
Connection Size	½" NPT or BSP	½" NPT or BSP	½" NPT or BSP
Index Protection	IP 66 or NEMA 4X (Weather tight)	IP 66 or NEMA 4X (Weather tight)	IP 65 or NEMA 4X (Weather tight)
Operating Temperature	Ambient -30°..+80°C (Dry) -10°..+60°C (Glycerine filled) -30°..+60°C (Silicone filled) Medium Max. +100°C	Ambient -30°..+80°C (Dry) -20°..+60°C (Glycerine filled) -30°..+60°C (Silicone filled) Medium Max. +100°C	Ambient -20°..+70°C (Dry) Medium Max. +80°C
Design Material	Case-Bezel : Polypropylene Blow out plate : Polypropylene Sensing : SS316 Connection : SS316L Window : Safety glass	Case-Bezel : Phenolic Blow out plate : Polypropylene Sensing : SS316 Connection : SS316L Window : Safety glass	Case-Bezel : Polypropylene Blow out plate : Polypropylene Sensing : SS316 Connection : SS316L Window : Safety glass
Mounting	(W) Wall mount, back flange (B) Back mounting	(W) Wall mount, back flange (B) Back mounting	(W) Wall mount, back flange (B) Back mounting

Stainless steel Safety Pattern Gauge



Model	SX550 Series
Dial Size (Inch.)	4½"
Accuracy Class	KL 1.0 of Full Scale, *KL 0.5
Pressure Range	Compound -1.. 24 bar Vacuum -1 bar ..0 Pressure 0..1000 bar
Liquid Filling	Dry or liquid filled
Connection Size	½" NPT or BSP
Index Protection	IP 65 (Weather tight)
Operating Temperature	Ambient -30°..+60°C (Dry) -20°..+60°C (Glycerine filled) -30°..+60°C (Silicone filled) Medium Max. +100°C
Design Material	Case-Bezel : SS316, Blow Out Back (BOB) Sensing : SS316 Connection : SS316 Window : Safety glass
Mounting	(D) Bottom mounting (B) Back mounting (P) Panel mounting, front flange

Safety gauge structure



Restrictor Screw Std
Reduce shock to the gauge to prevent any sudden pressure surges or oscillations happen



Safety Gauge
Blow-Out-Back (BOB)
Laminated Safety Glass
Internal Overrange Protector



Blow-Out-Back (BOB)
Blowout protection to prevents release of any process medium out the case front or face



IP65



Accuracy
Class 0.5-1.0



High Pressure
up to 1000 bar



Differential Pressure Gauge

FF500 Series

- Double bourdon tube system
- Accuracy class 1.6 (P>1 bar), 2.5 (1 bar)
- Static pressure = Maximum pressure range
- Dial size 4", parallel dual connection
- Pressure range 0..1 bar up to 60 bar
- Index protection IP45, dry gauge
- Connection size 1/2" NPT or BSP
- Ambient temp. -20°..+60°C
- Medium temp. Max. +60°C
- Direct (D), panel (P) & Wall mount (W)
- Design material :

Casing/bezel : SS304
Sensing element : Copper alloy
Connection : Copper alloy
Window : Instrument glass



SF500 Series

- All stainless steel double bourdon tube
- Accuracy class 1.6 (P>1 bar), 2.5 (1 bar)
- Static pressure = Maximum pressure range
- Dial size 4", parallel dual connection
- Pressure range 0..1 bar up to 60 bar
- Index protection IP45, dry gauge
- Connection size 1/2" NPT or BSP
- Ambient temp. -20°..+60°C
- Medium temp. Max. +60°C
- Direct (D), panel (P) & Wall mount (W)
- Design material :

Casing/bezel : SS304
Sensing element : SS316
Connection : SS316
Window : Instrument glass



FH511 Series

- Magnetic operating mechanism
- Accuracy ±2% of Full scale differential
- Dial size 2", 3 1/2", 4", 4 1/2" and 6"
- Pressure range 0..1 psi up to 60 psi
- Mounting : Bottom, Back and In-Line
- Connection size 1/4"NPT or BSP Female
- Process temperature Max. +80°C
- Static pressure Max. 1500 psi
- Direct (D), panel (P) & Wall mount (W)
- Design material :

Body : Aluminum/Brass
O-Ring/Diaphragm : Buna-N
Case : SS304/SS316
Window : Glass/Safety glass



FH512 Series

- Magnetic operating mechanism
- Accuracy ±2% of Full scale differential
- Dial size 2", 3 1/2", 4", 4 1/2" and 6"
- Pressure range 0..1 psi up to 60 psi
- Mounting : Bottom, Back and In-Line
- Connection size 1/4"NPT or BSP Female
- Process temperature Max. +80°C
- Static pressure Max. 1500 psi
- Direct (D), panel (P) & Wall mount (W)
- Design material :

Body : SS304/SS316
O-Ring/Diaphragm : Buna-N
Case : SS304/SS316
Window : Glass/Safety glass



FX Series

- High static pressure range (P = 100 Bar)
- Dial size 4" and 6", Liquid fillable
- Pressure range 0..25 mbar up to 25 bar
- Bottom, Surface, Wall and 2" Pipe mount
- Conn. size 1/2"NPT or BSP Male/Female
- Index protection IP65 Weather proof
- Accuracy class 2 1/2%, *Class 1.6%
- Ambient temperature -20°..+60°C
- Medium temperature Max. +120°C
- Static pressure Max. 100 bar/1500 psi
- Design material :

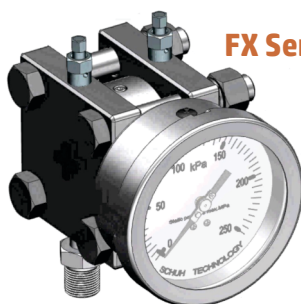
Casing : SS304, *SS316
Wetted part : SS316
Measure cell : SS316
Window : Glass, *Safety glass



FH510 Series

- Magnetic piston differential gauge
- Dial nominal size 4 1/2" (114 mm)
- Pressure range 0..30 Pa up to 30 kPa
- Surface, Panel bracket and Pipe mount
- Conn. size 1/8"NPT Female, both taps
- Ingress protection NEMA 3/IP 54
- Accuracy class 2.0% of Full Scale
- Ambient temperature 0..+60°C
- Medium temperature Max. +100°C
- Design material :

Housing : Die cast aluminum
Press. element : SS316
Magnetic piston : SS316
Window : Curved clear acrylic



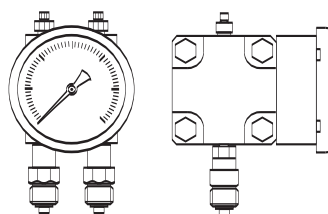
FX Series



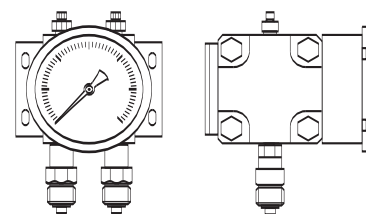
Complete
Mounting



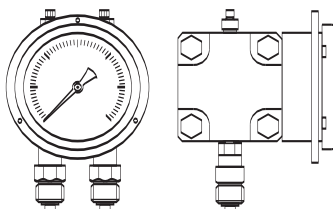
Static Press
100 Bar



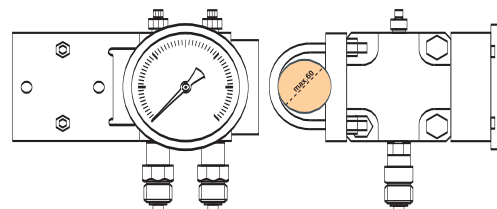
Type D - Direct Bottom mounting



Type S - Surface mounting with Clamp



Type P - 3 Fixing holes back panel mount flush



Type 2 - 2" pipe mounting vertical or horizontal



Pressure Gauge with Contact

SAA500 Series

- Snap action magnetic contact pressure gauge
- Accuracy class 1.6 of Full Scale
- Dry type contact pressure gauge
- Contact set accuracy class 4.0
- Dial size 4" and 6"
- Pressure range -1.0, 0..1 bar up to 600 bar
- Ingress protection IP32, dry gauge
- Connection size 1/2" NPT or BSP
- Ambient temp. -10°..+60°C
- Medium temp. Max. +80°C
- Direct (D) and Back mount (B)
- Design material :
 - Casing/bezel : Chromed steel
 - Wetted parts : Copper alloy
 - Window : Polycarbonate



SE Series

- All stainless steel contact pressure gauge
- Electric, Magnetic and Inductive contact
- Dry type or Liquid fillable gauge
- Accuracy class 1.6 of Full Scale
- Contact set accuracy class 4.0
- Dial size 4" and 6", BOB (Blow-Out-Back)
- Pressure range -1.0, 0..1 bar up to 1000 bar
- Ingress protection IP54 (Dry), IP65 (Filled)
- Connection size 1/2" NPT or BSP
- Ambient temp. -20°..+60°C
- Medium temp. Max. +80°C
- Direct (D), Back (B), Wall (W), Panel mount (P)
- Design material :
 - Casing/bezel : SS304
 - Wetted parts : SS316
 - Window : Glass, with adjuster



1 to 3 Contacts

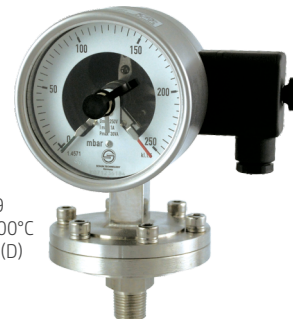
EC Series (Accessories)

- Portable contact gauge
- Applicable for 4" pressure gauge
- Dry type contact gauge case
- Designed for SC500, SX500, PX40
- Contact characteristics :
 - Contact set accuracy Class 4.0
 - 1 or 2 contacts function
 - Magnetic and Electric contact
 - Working voltage 380 or 220 Vac
 - Max. current 1A, contact power 30 VA



SES Series

- Diaphragm low pressure contact gauge
- Electric, Magnetic and Inductive contact
- Dry type contact pressure gauge
- Accuracy class 1.6 or 2.5 (P<250 mbar)
- Contact set accuracy class 4.0
- Dial size 4" and 6", *BOB (Blow-Out-Back)
- Pressure range 0..40 mbar up to 25 bar
- Or all equivalent vacuum, compound ranges
- Ingress protection IP54 (Dry) to IEC/EN 60529
- Ambient/Medium temp. -20°..+60°C/Max. +100°C
- Connection size 1/2" NPT or BSP Direct mount (D)
- Design material :
 - Casing/bezel : SS304
 - Wetted parts : SS316
 - Window : Glass, with adjuster



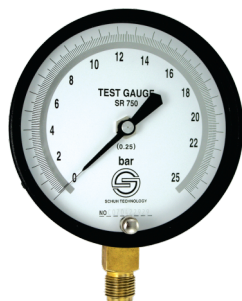
1 - 2 Contacts Configuration

	1 Contact Control Function		2 Contacts Control Function			
Magnetic Snap-action Electric Contact	Type O Contact open above set point 	Type C Contact close above set point 	Type OC 1st contact open & 2nd contact close above set point 	Type CO 1st contact close & 2nd contact open above set point 	Type OO 1st contact open & 2nd contact open above set point 	Type CC 1st contact close & 2nd contact close above set point
	Type IC Contact close above set point 	Type IO Contact open above set point 	Type 2C 1st contact close & 2nd contact close above set point 	Type 2O 1st contact open & 2nd contact open above set point 	Type CF 1st contact close & 2nd contact open above set point 	Type OF 1st contact open & 2nd contact close above set point

Mechanical Precision Test Gauge

SR750 Series

- Dial 6", Black enamel steel case test gauge
- External Calibration Device (ECD)
- Parallax mirror dial range reading
- Knife edge pointer design
- Accuracy Class 0.5 or Class 0.25
- Press. range -1.0, -1..+24 to 0..1000 bar
- Conn. size 1/2" NPT or BSP Male/Female
- Index protection IP43
- Ambient/Medium temp -20°..+60°C/Max.80°C
- Design material :
 - Casing : Black enamel steel
 - Wetted part : Copper alloy
 - Window : Glass

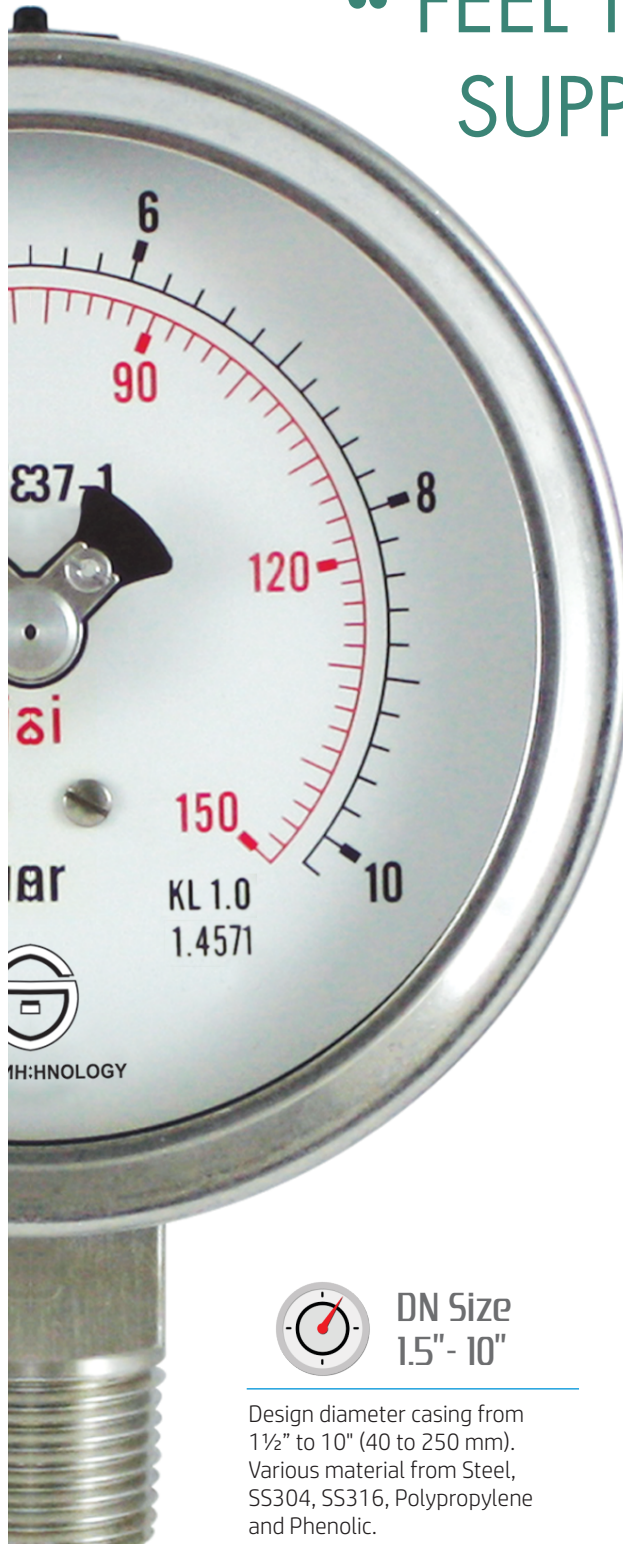


ST750 Series

- Dial 6", All stainless steel test gauge
- External Calibration Device (ECD)
- Parallax mirror dial range reading
- Knife edge pointer design
- Accuracy Class 0.5 or Class 0.25
- Press. range -1.0, -1..+24 to 0..1600 bar
- Conn. size 1/2" NPT or BSP Male/Female
- Index protection IP43
- Ambient/Medium temp -20°..+60°C/Max.80°C
- Design material :
 - Casing : SS304
 - Wetted part : SS316
 - Window : Glass



“ FEEL THE MOST PRECISION, SUPPORT AND SERVICES ”



QUALITY

- Over pressure test
- Hydro static test
- Fatigue test
- Leak test



SERVICES

- Product training
- Parts warranty
- Customid design
- Biggest stockist



SUPPORT

- Competitive price
- Fast delivery
- Technical support
- National coverage



OUR TECHNOLOGIES



DN Size
1.5" - 10"

Design diameter casing from 1½" to 10" (40 to 250 mm). Various material from Steel, SS304, SS316, Polypropylene and Phenolic.



DCS Sizes
DN25-DN75

Various Diaphragm seal diameter size from 40 up to 97 mm. Pressure range 0..1 up to 600 bar Highest pressure in its class.



Wide Range
Flange Sizes

Wide selection flange size and rating following DIN EN1092-1, ASME B16.5, JIS B2220 or other standard available on request.



Diaphragm P
up to 600 bar

With selected material, diaphragm workable up to 600 bar, highest pressure range in it's class.



ETFE-PTFE
Coat-Lining

ETFE (Ethylene Tetrafluoroethylene)
PTFE Lining



Double laser
weld diaphragm

Double line diaphragm laser welding to provide high pressure range and accurate reading.



SCHUH TECHNOLOGY[®]
Accuracy, Warranty and Quality